



# मुख्यमंत्री जल स्वावलम्बन अभियान

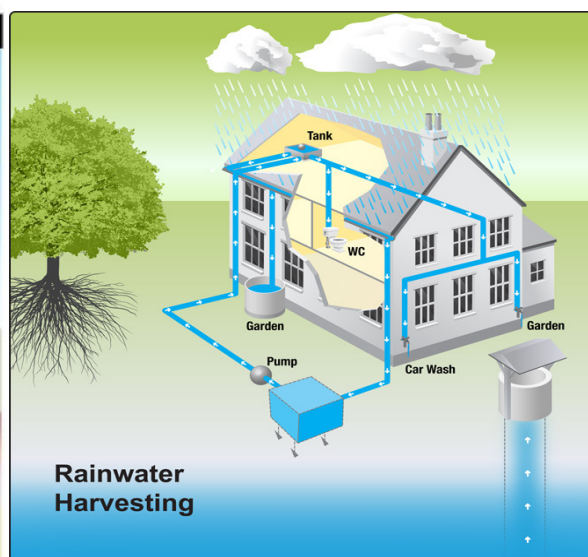
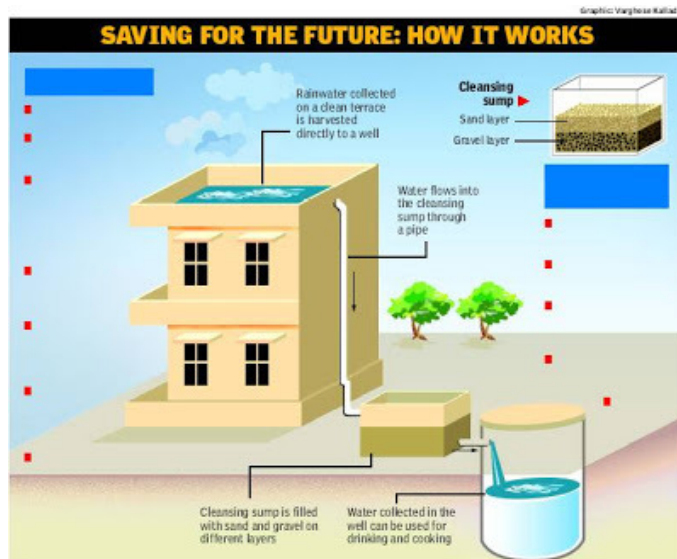
## Supplementary DPR (Second Phase)



नगर निगम बीकानेर



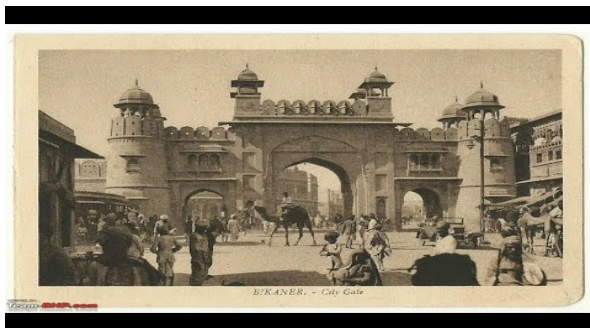
# SUPPLEMENTARY DETAIL PROJECT REPORT FOR MUKHAYAMANTRI JALSWAVLAMBAN ABHIYAAN



## BIKANER CITY

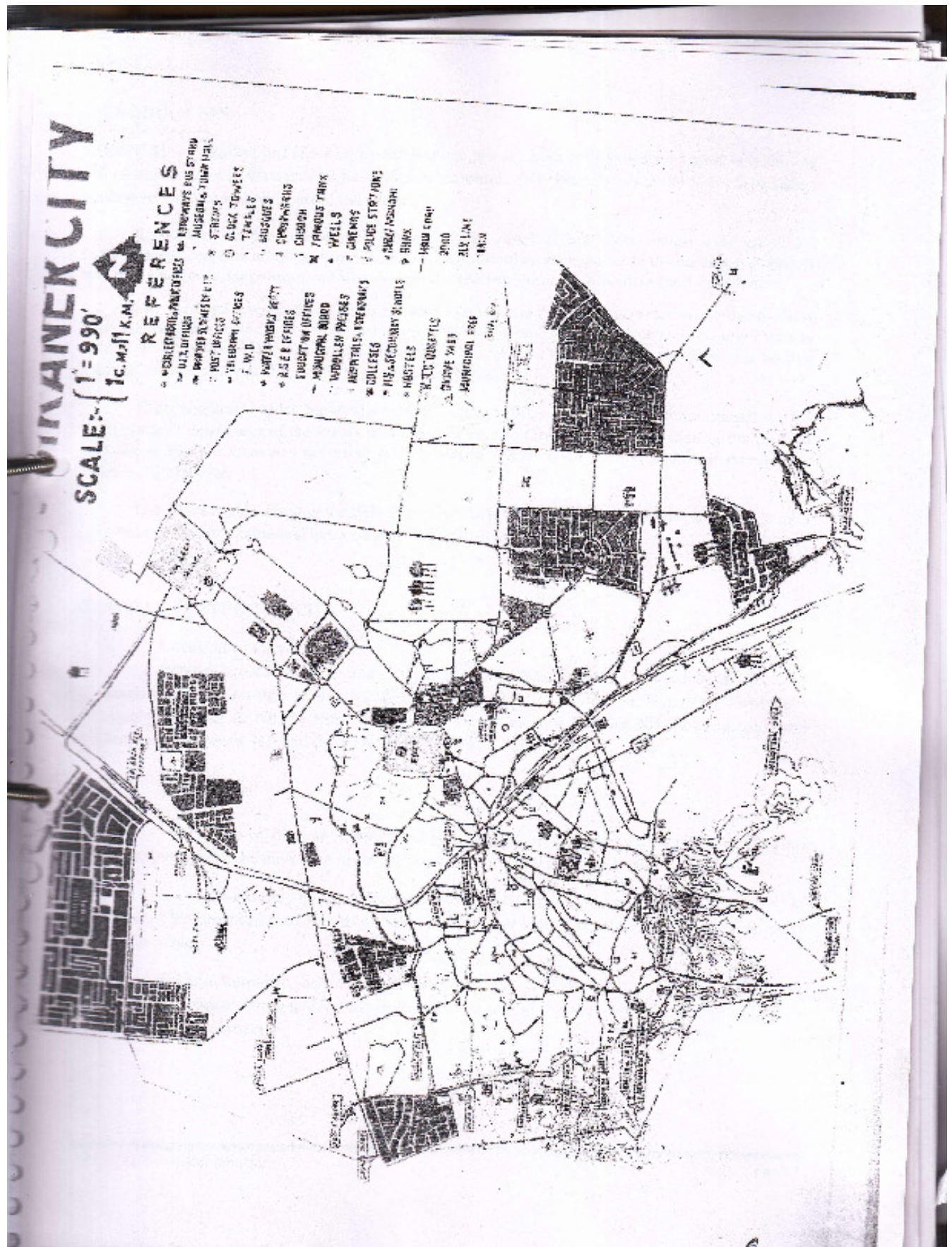


# HISTORY OF BIKANER



जल संरक्षण  
जरूरत भी है और कर्तव्य भी





## **INTRODUCTION :**

**BIKANER – Founded** in 1488 AD, by the Rathore prince, Bika the liveliest and most enterprising son of Rao Jodha of Marwar. The harsh desert surrounds this rich city, no doubt few could gather courage to venture into this part of the globe.

Situated directly on the ancient caravan routes which linked West/Central Asia and North India with the seaports of Gujarat, made Bikaner a flourishing trade center in the medieval period. It was then known as Jangaladesh and was coveted by Gurjar, Pratihars, Chauhans and the Bhatias.

The fortified town still preserves the aura of medieval time, as it is protected by harsh desert and remained untouched by outside influence. The city is an exercise in architecture, one gapes in awe at the embattled wall with ornate gates. The lofty houses with excellent carvings still survive averring to the craftsmanship and prosperity of the people.

The enlightened ruler Maharaja Ganga Singh (1880 – 1943 AD), is remembered for his work towards upliftment of the locals and constructing the Ganga Canal for irrigating the parched land. Now Bikaner treasures the precious Himalayan waters come to this arid land through the Indira Gandhi Canal.

The town is also famous for delicacies like Rasgullas, Bhujias & Papads. It has become a big wool production centre and has a unique Camel Research Farm.

## **NATURAL FEATURE OF CITY**

### **i. Location of City :**

Bikaner is located in the midst of the Thar Desert is lies at 28° N Latitude & 73° 19' E longitudes it has attitude at about 228M above the M.S.L. The national Highway No-11 from Agra to Bikaner & No. 15 from Pathankot to Kadla meet at Bikaner NH-79 connected with Jodhpur, It is about 460 km. from Delhi & 330 Km. from Jaipur.

### **ii. Climatology**

The climate of Bikaner is hot & arid with extreme temperature during summer hot wind below throughout the days. The night are however generally pleasant & cool.

The mean monthly temperature varies from 22°C to 47°C in summer & 3°C to 27°C in winter. The maximum and minimum temperatures ever recorded are 49.4°C in summer and - 4°C in winter.

Relative humidity varies from 30 to 73% in the morning to 16 to 50% in the evening prevailing wind are from south-west in month of March to October & from north in months of November to February.

## **DEMOGRAPHIC DATA**

### **Increasing Population in Bikaner during 1901 - 20011**

<b>YEAR</b>	<b>POPULATION</b>	<b>DIFFERENCE</b>	<b>INCREASING %</b>
1901	53075	-	-
1911	55826	(+)2751	5.18
1921	69410	(+)13584	24.33
1931	85927	(+)16517	23.80
1941	127226	(+)41299	48.06
1951	130293	(+)3067	2.41
1961	166772	(+)36479	28.00
1971	208894	(+)42122	25.26
1981	287712	(+)78818	37.73
1991	416289	(+)128577	44.69
2001	529007	(+)112718	27.08
2011	644406	(+)115399	21.81